



www.FGWilson.com

P1700P1/P1875E1

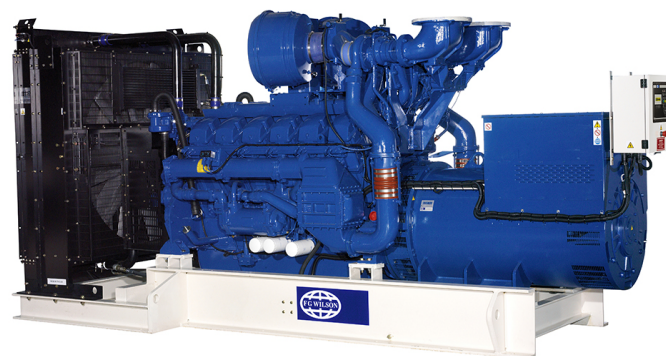


Image for illustration purposes only.

Output Ratings

Voltage, Frequency	Prime	Standby
400V, 50 Hz	1700.0 kVA / 1360.0 kW	1875.0 kVA / 1500.0 kW
	- / -	- / -

Ratings at 0.8 power factor.

Please refer to the output ratings technical data section for specific generator set outputs per voltage.

Prime Rating

These ratings are applicable for supplying continuous electrical power (at variable load) in lieu of commercially purchased power. There is no limitation to the annual hours of operation and this model can supply 10% overload power for 1 hour in 12 hours.

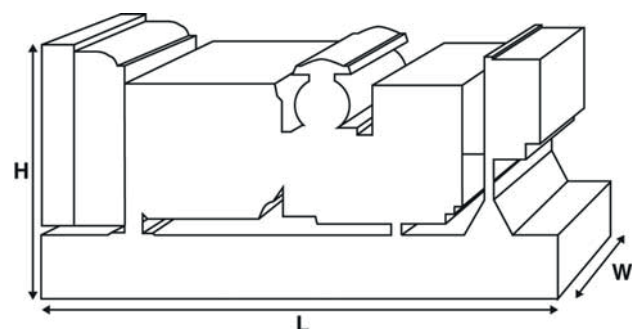
Standby Rating

These ratings are applicable for supplying continuous electrical power (at variable load) in the event of a utility power failure. No overload is permitted on these ratings. The alternator on this model is peak continuous rated (as defined in ISO 8528-3).

Standard Reference Conditions

Note: Standard reference conditions 25°C (77°F) Air Inlet Temp, 100m (328 ft) A.S.L. 30% relative humidity.

Fuel consumption data at full load with diesel fuel with specific gravity of 0.85 and conforming to BS2869: 1998, Class A2.



Ratings and Performance Data

Engine Make & Model: Perkins® 4012-46TAG3A

Alternator manufactured for FG Wilson by: Leroy Somer

Alternator Model: LL9324F

Control Panel: PowerWizard 1.1+

Base Frame: Heavy Duty Fabricated Steel

Circuit Breaker Type: 3 Pole ACB-Option

Frequency: 50 Hz 60 Hz

Engine Speed: rpm 1500 -

Fuel Tank Capacity: litres (US gal) -

Fuel Consumption: l/hr (US gal/hr)

(100% Load) - Prime 349.7 (92.4) -

- Standby 390.2 (103.1) -

Available Options

FG Wilson offer a range of optional features to tailor our generator sets to meet your power needs. Options include:

- Upgrade to CE Certification
- A wide range of Sound Attenuated Enclosures
- A variety of generator set control and synchronising panels
- Additional alarms and shutdowns
- A selection of exhaust silencer noise levels

For further information on all of the standard and optional features accompanying this product please contact your local Dealer or visit: www.FGWilson.com

Dimensions and Weights

Length (L) mm (in)	Width (W) mm (in)	Height (H) mm (in)	Dry kg (lb)	Wet kg (lb)
5259 (207.0)	2192 (86.3)	2453 (96.6)	10997 (24244)	11207 (24707)

Dry = With Lube Oil

Wet = With Lube Oil and Coolant

Ratings in accordance with ISO 8528, ISO 3046, IEC 60034, BS5000 and NEMA MG-1.22. Generator set pictured may include optional accessories.

Engine Technical Data		
No. of Cylinders / Alignment:		12 / Vee
Cycle:		4 Stroke
Bore / Stroke: mm (in)		160.0 (6.3)/190.0 (7.5)
Induction:		Turbocharged Air To Air Charge Cooled
Cooling Method:		Water
Governing Type:		Electronic
Governing Class:		ISO 8528
Compression Ratio:		13.0:1
Displacement: l (cu. in)		45.8 (2794.9)
Moment of Inertia: kg m² (lb/in²)		19.30 (65951)
Engine Electrical System:		
- Voltage / Ground		24/Negative
- Battery Charger Amps		40
Weight: kg (lb)	- Dry	4400 (9700)
	- Wet	4604 (10150)

Performance	50 Hz	60 Hz
Engine Speed: rpm	1500	-
Gross Engine Power: kW (hp)		
- Prime	1500.0 (2012.0)	-
- Standby	1643.0 (2203.0)	-
BMEP: kPa (psi)		
- Prime	2618.0 (379.7)	-
- Standby	2868.0 (415.9)	-

Fuel System				
Fuel Filter Type:		Replaceable Element		
Recommended Fuel:		Class A2 Diesel or BSEN590		
Fuel Consumption: l/hr (US gal/hr)				
	110%	100%	75%	50%
Prime	Load	Load	Load	Load
50 Hz	390.2 (103.1)	349.7 (92.4)	259.9 (68.7)	182.5 (48.2)
60 Hz	-	-	-	-
		100%	75%	50%
Standby		Load	Load	Load
50 Hz		390.2 (103.1)	286.4 (75.7)	197.5 (52.2)
60 Hz		-	-	-

Air Systems	50 Hz	60 Hz
Air Filter Type:	Replaceable Element	
Combustion Air Flow: m ³ /min (cfm)		
- Prime	125.0 (4414)	-
- Standby	135.0 (4767)	-
Max. Combustion Air Intake Restriction: kPa (in H ₂ O)	4.0 (16.1)	-

Cooling System	50 Hz	60 Hz
Cooling System Capacity: l (US gal)	207.0 (54.7)	-
Water Pump Type: Centrifugal		
Heat Rejected to Water & Lube Oil:		
kW (Btu/min)	- Prime 510.0 (29003)	-
	- Standby 625.0 (35543)	-
Heat Radiation to Room: Heat radiated from engine and alternator		
kW (Btu/min)	- Prime 164.5 (9355)	
	- Standby 185.7 (10561)	
Radiator Fan Load: kW (hp)	64.0 (85.8)	-
Radiator Cooling Airflow: m ³ /min (cfm)	1920.0 (67804)	-
External Restriction to Cooling Airflow: Pa (in H ₂ O)	250 (1.0)	-

Designed to operate in ambient conditions up to 50°C (122°F).
Contact your local FG Wilson Dealer for power ratings at specific site conditions.

Lubrication System	
Oil Filter Type:	Spin-On, Full Flow
Total Oil Capacity: l (US gal)	177.0 (46.8)
Oil Pan: l (US gal)	159.0 (42.0)
Oil Type:	API CH4 15W-40
Oil Cooling Method:	Water

Exhaust System	50 Hz	60 Hz
Maximum Allowable Back Pressure: kPa (in Hg)	5.0 (1.5)	-
Exhaust Gas Flow: m ³ /min (cfm)		
- Prime	350.0 (12360)	-
- Standby	350.0 (12360)	-
Exhaust Gas Temperature: °C (°F)		
- Prime	480 (896)	-
- Standby	480 (896)	-

(Based on diesel fuel with a specific gravity of 0.85 and conforming to BS2869, Class A2)

Alternator Physical Data	
Manufactured for FG Wilson by:	Leroy Somer
Model:	LL9324F
No. of Bearings:	1
Insulation Class:	H
Winding Pitch Code:	2/3 - 6S
Wires:	6
Ingress Protection Rating:	IP23
Excitation System:	AREP
AVR Model:	R449

Alternator Operating Data	
Overspeed: rpm	2250
Voltage Regulation: (Steady state)	+/- 0.5%
Wave Form NEMA = TIF:	50
Wave Form IEC = THF:	2.0%
Total Harmonic content LL/LN:	3.5%
Radio Interference:	Suppression is in line with European Standard EN61000-6
Radiant Heat: kW (Btu/min)	
- 50 Hz	62.7 (3566)
- 60 Hz	-

Alternator Performance Data:		50 Hz			60 Hz		
Data Item		415/240V	400/230V	380/220V			
Motor Starting Capability* kVA		5086	4740	4295			
Short Circuit Capacity** %		300	300	300			
Reactances: Per Unit							
	Xd	3.119	3.358	3.720			
	X'd	0.247	0.266	0.294			
	X''d	0.127	0.137	0.152			

Reactances shown are applicable to prime ratings.

*Based on 30% voltage dip at 0.4 power factor.

**With optional permanent magnet generator.

[illegible][illegible]

Documentation

A full set of operation and maintenance manuals and circuit wiring diagrams.

Generator Set Standards

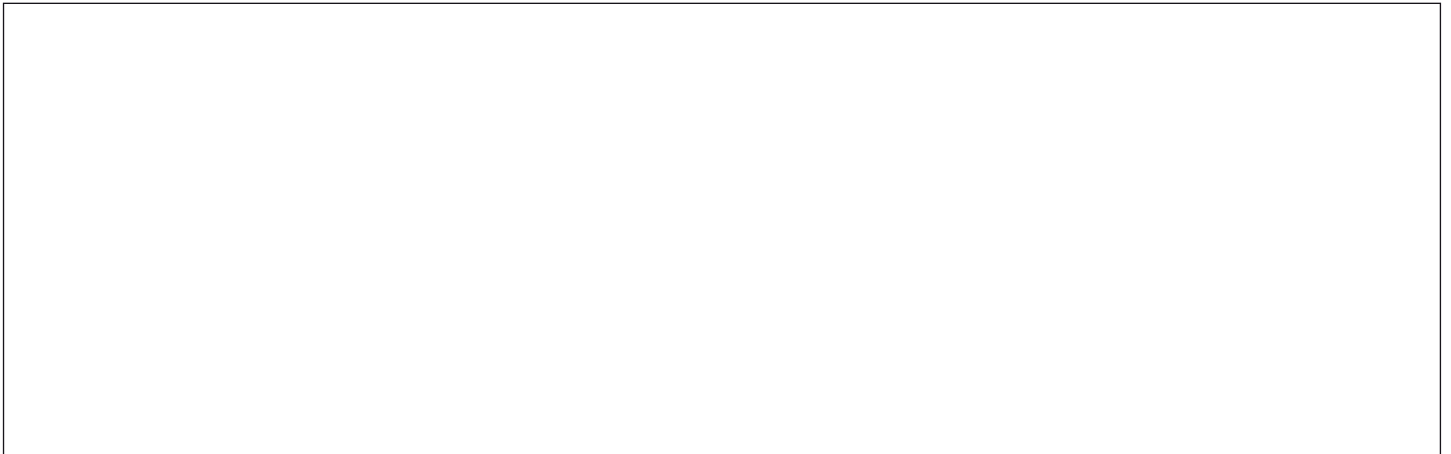
The equipment meets the following standards: BS5000, ISO 8528, ISO 3046, IEC 60034, NEMA MG-1.22.

FG Wilson is a fully accredited ISO 9001 company.

Warranty

All prime equipment carries a one year manufacturer's warranty with unlimited hours or two year manufacturer's warranty limited to 6,000 running hours. Standby equipment, limited to 500 running hours per year, has a three year manufacturer's warranty.

Dealer contact details:



FG Wilson manufactures product in the following locations:

Northern Ireland • Brazil • China • India • USA

With headquarters in Northern Ireland, FG Wilson operates through a Global Dealer Network.

To contact your local Sales Office please visit the FG Wilson website at www.FGWilson.com.

FG Wilson is a trading name of Caterpillar (NI) Limited.